

SCHUMACHER EDITION

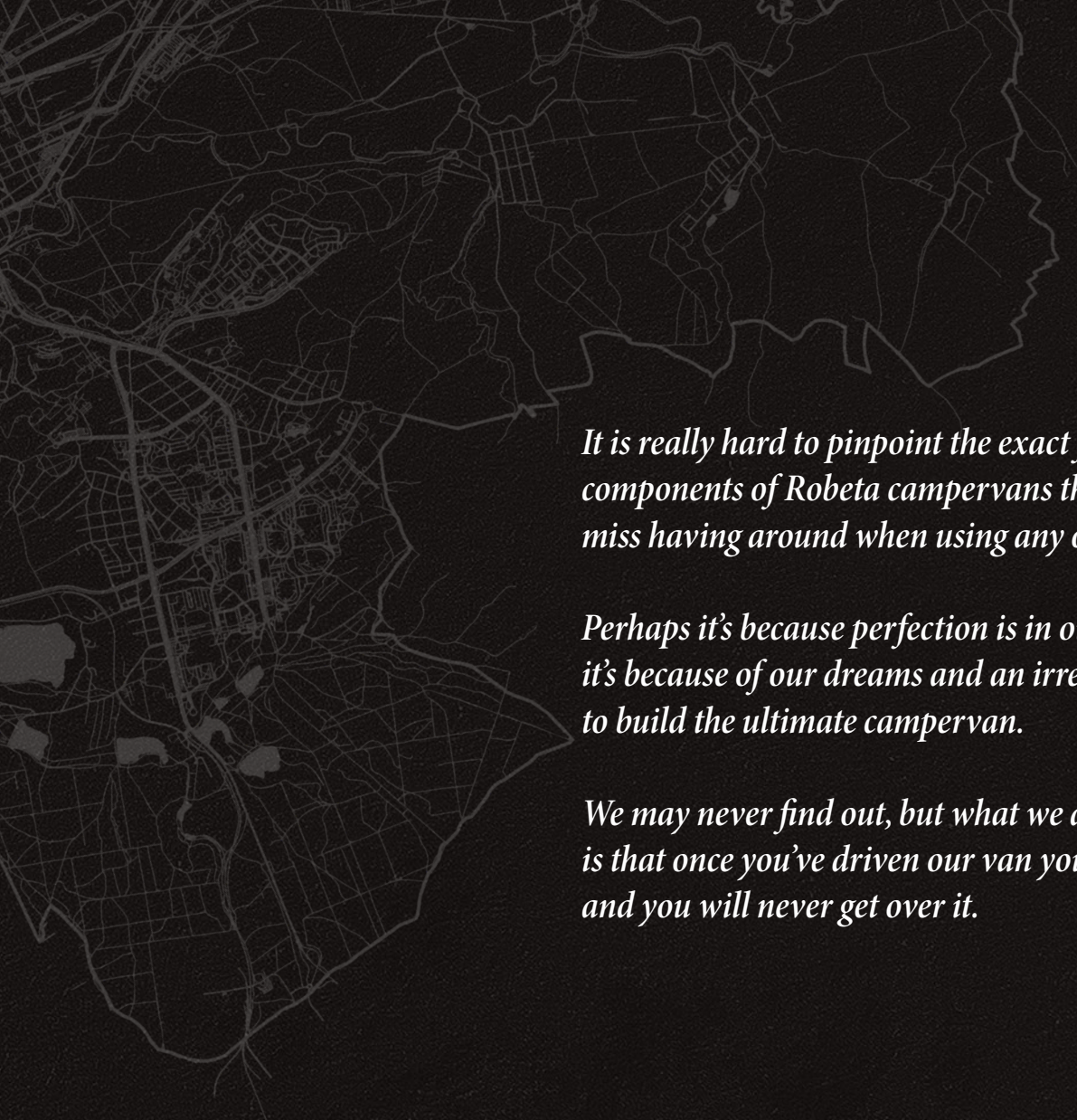
Mercedes Benz Sprinter


01/2023



ROBETA

feel the difference



It is really hard to pinpoint the exact fundamental components of Robeta campervans that one would instantly miss having around when using any other campervan out there.

Perhaps it's because perfection is in our veins or perhaps it's because of our dreams and an irresistible desire to build the ultimate campervan.

We may never find out, but what we do know is that once you've driven our van you will never forget it... and you will never get over it.





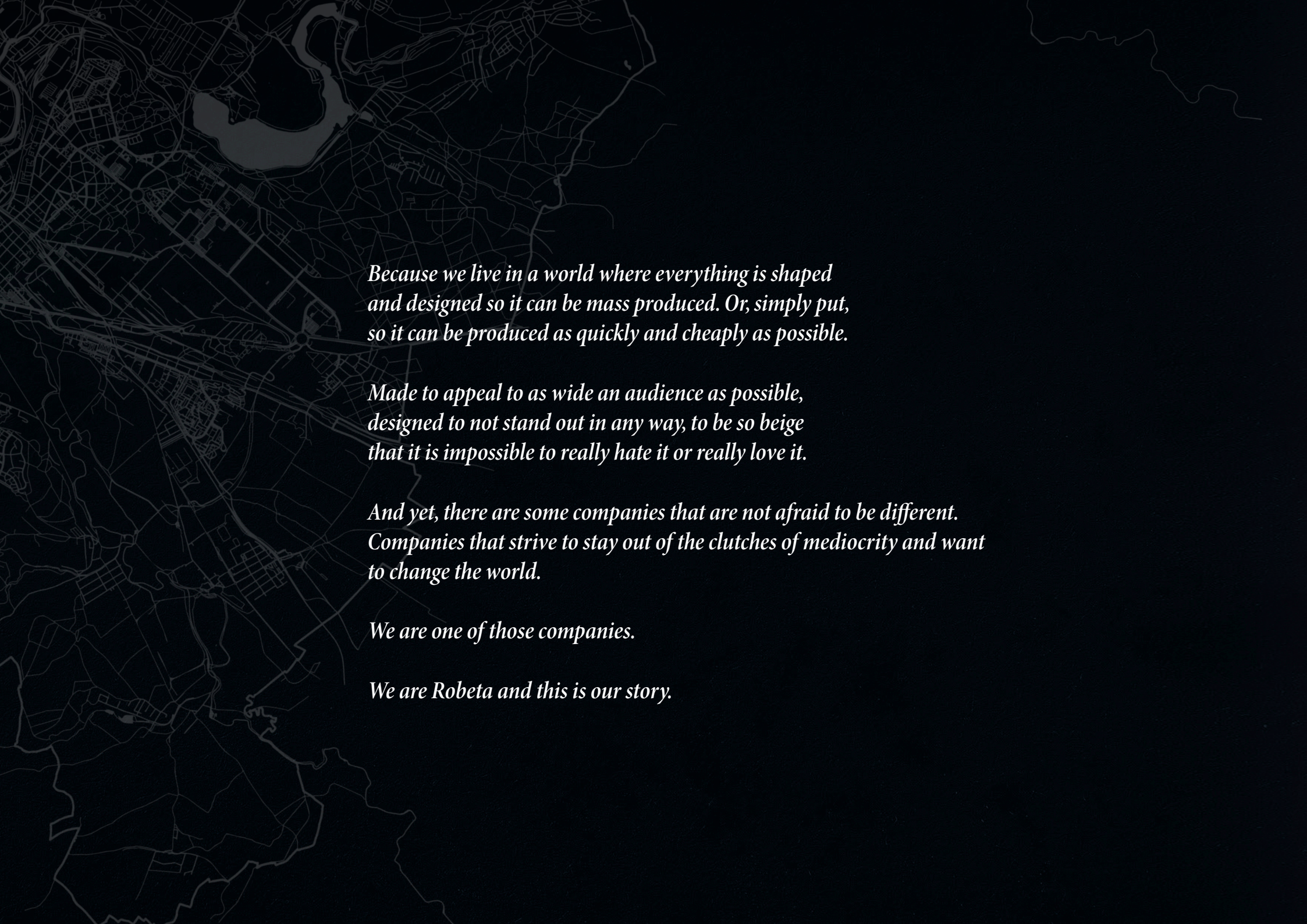


What drives us?

*Is it the relentless need to outdo ourselves
or is it our basic instinct that pushes us
to go one step further?*

*In truth, there is no one simple answer to this question,
but what we can assure you is this: we will always strive
to be the best we can possibly be, but we will never
believe that we actually are.*





*Because we live in a world where everything is shaped
and designed so it can be mass produced. Or, simply put,
so it can be produced as quickly and cheaply as possible.*

*Made to appeal to as wide an audience as possible,
designed to not stand out in any way, to be so beige
that it is impossible to really hate it or really love it.*

*And yet, there are some companies that are not afraid to be different.
Companies that strive to stay out of the clutches of mediocrity and want
to change the world.*

We are one of those companies.

We are Robeta and this is our story.





ROBETA SCHUMACHER EDITION

A revolutionary vehicle that goes beyond the ordinary. A motorhome that is more than just a companion on trips and long journeys. A vehicle that, with its innovative and modern interior, is reminiscent of prestigious yachts. All this describes our new Robeta model, which was created in cooperation with the former F1 star – Ralf Schumacher.

The “Robeta Schumacher Edition” became the first luxury vehicle in the motorhome category.

The project, which lasted for more than two years, is the result of making compromises, following Schumacher’s wishes, and finding the best solutions on the market. Every single detail and little thing inside the vehicle is finished to perfection, designed to give you a hotel-level comfort. The overall appearance, equipment and furniture are on a completely different level than seen in average motorhomes.

During the creation and design of the motorhome, we have followed the guidelines from the nautical segment of prestigious yachts and added the latest and most powerful electronics.



PRICING AND OPTIONS

BASE PRICE	302,590.00 EUR
-------------------	-----------------------

4x4 Four-Wheel Drive Option	8,590.00 EUR
-----------------------------	--------------

Furniture version with special pet area	3,090.00 EUR
---	--------------

Transportation costs	2,090.00 EUR
----------------------	--------------

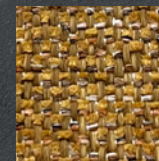
Automatic leveling system – OPTIONAL

(Automatic leveling system requires the waste water and fresh water tank to be smaller – installation of the Automatic leveling system is provided by our partners)

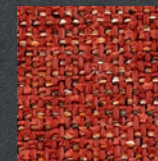
Textil options:



ABACO 19



ABACO 45



ABACO 129



ABACO 15

TECHNICAL SPECIFICATIONS

VEHICLE TYPE	MERCEDES BENZ SPRINTER 519 CDI
---------------------	---------------------------------------

Vehicle category	box van
Drive	rear-wheel drive / optional 4WD
Engine	2.0 L 4 cylinders
Power KW	140
Power KM	190
Wheel base (mm)	4325
Unladen weight including equipment (kg)	4180 kg
Load capacity category (kg)	5500 kg

EQUIPMENT

CHASSIS

Selenite grey, tenorite grey or obsidian black exterior paint

MBUX multimedia system with a 10.25" touch screen

Electric wiring for trailer socket

Dashboard charging kit

Active Distance Assist DISTRONIC

Electrically foldable external rear-view mirrors

Storage compartment latch

Left and right storage compartment latch

Chrome-plated cooling grille

The Automatic Leveling System - optional

WIRELESS REMOTE CONTROL MULTI-FUNCTION KEYS

Passenger seat heating

Driver seat heating

Additional warm air heating, electric

Automatic air conditioning THERMOTRONIC

Blind Spot Assist

Active Lane Keep Assist

Parking kit with a 360° camera

Combined colour display instrument cluster

Attention Assist

93 litre main tank

Fog lamps with cornering lighting

Side marker lights

Exit courtesy lights

Convenient roof-mounted control unit

High-performance LED headlights

Cruise control

Armrest, driver and passenger doors

Armrests on both sides, driver's side

Armrests on both sides, passenger's side

Driver seat frame, low

Passenger seat frame, low

Comfortable passenger seat

Comfortable driver headrest

Comfortable passenger headrest

Swivel driver seat base

Swivel passenger seat base

Electronic sliding door assist system on the right side

Rear door, bi-fold, opening to sides

Rear door step

Noise mitigation measures

Acoustic package

Brake handle, detachable

Lower EC protection

Front bumper in vehicle colour, painted

Level II stabilization

Height upgrade

Leather steering wheel

Cooling grille in vehicle colour

Double tyres on rear axle

Extra tall roof in vehicle colour, painted

Smartphone holder with wireless charging

Additional main fuses for campervan

Special ABH signal pick-up on the dashboard

Cab blackout (front and sides)

MULTIMEDIA SYSTEM

Mercedes multimedia system with a 10.25" touch screen

Remote control on steering wheel

MediaMaster® JL Audio sound system, NMEA 2000®, MMR-40 with an LCD display in dinette

JL audio amplifier VX600/6

2x subwoofer (low-tone speaker) 10TW1-4 with 4 speakers in the living area (3 zones / dinette / kitchen / bathroom)

WATER

140L fresh water tank (With the Automatic Leveling System - 90L)

100L grey water tank (With the Automatic Leveling System - 50L)

55L black water tank

Water booster pump with filter

External shower

HEATING

Truma 6D + E with I Net Box

Dometic Freshlight 2200 with a kitchen window

ELECTRICITY

Mastervolt and Simarine control systems

Simarine Nereide 19-key control panel

Lithium battery, 6kWh/ 12kWh 12V 460 AH / optional 920 AH

Mastervolt Mass Combi Ultra 12/3000-150

3in1 system

150A charger

MPPT Solar Charger ChargeMaster SCM-60 MppT

Mastervolt Easy View 5 control panel

MastervoltMac Plus 12-12/50- 2x 100A DC charger

230 volt socket in the entrance area/kitchen/living room and garage

USB ports

External SAT connector

Thule 6300 4,5 m electric awning

Insect screen on the entrance door

V-Board 1200 mm electric step

Digital switch

300 WP solar device

LIVING AREA

High-quality yacht furniture construction in wood (poplar, birch, okoume, oak)

Three fabric variants for the furniture set

Meganite Kerrock table in entrance area

Electric slide-out lift bed (1450 mm x 2000 mm)

Sofa with fabric upholstery and cushions

Genuine glass window incl. frame

Smart LED lights with display and smartphone control (RGB lighting/dual white lighting/ LED spots)

Wine cooler

Cigar humidor

Skylight 700 mm x 500 mm

BATHROOM

Mirror with integrated illumination

Separate shower HG Vernis

Aerator HG Vernis

Ceramic toilet Dometic Masterflush

Genuine glass shower door

Stone look shower tub

Electric roof fan 400 mm x 400 mm

KITCHEN

Pull-out cutting board and spice drawer

Meganite Kerrock countertop with integrated sink

150L fridge with 16L freezer

Oven

Built-in induction hob

Electric dishwasher

Waste bin

Cutlery drawer

De Longhi Dedea Barista coffee machine set for ESE bean coffee and tea pods

AMONGST THE ELITE

In addition to high-quality materials, representative furniture and the most advanced innovative solutions, the vehicle also offers quite a few outstanding accessories that will take your travelling experience to the next level. Throughout the motorhome, you will find as many lights as in the average apartment building.

These are very special lights with light-emitting diodes that emit the kind of light that improves the ambiance and the mood of the passengers. This is a proven technology that, last but not least, also brought us an award at the local level.

The sound system and audio equipment of the vehicle also deserve special mention. The motorhome is equipped with a revolutionary JL Audio sound system which is quite a rarity in this class.





THE INTERIOR

The interior of the vehicle is a perfect blend of innovation and incredible development advancements. We have spent a lot of time on the choice of materials - because quality is always the first priority at Robeta. The entire vehicle is a result of collaboration, respecting wishes and defying the limits of the impossible. The solid-quality furniture in the Ralf Schumacher Edition is made especially for Robeta by a well-known yacht furniture manufacturer from Slovenia and has never been seen before in this version in any motorhome.

THE KITCHEN

The kitchen is full of hidden corners, drawers, and storage surfaces that allow storage and preparation for every occasion. Besides a modern induction hob, it also contains a dishwasher, a 150 l Slimline refrigerator, a hot air grill and a separate wine cooler.







THE BATHROOM

Despite the limited space, the bathroom is surprisingly large. It is distinguished by its practicality and a touch of luxury. It has a shower with a glass partition, a black washbasin, a ceramic toilet with a fixed tank and a large illuminated mirror. A feeling of spaciousness you don't expect in a motorhome.





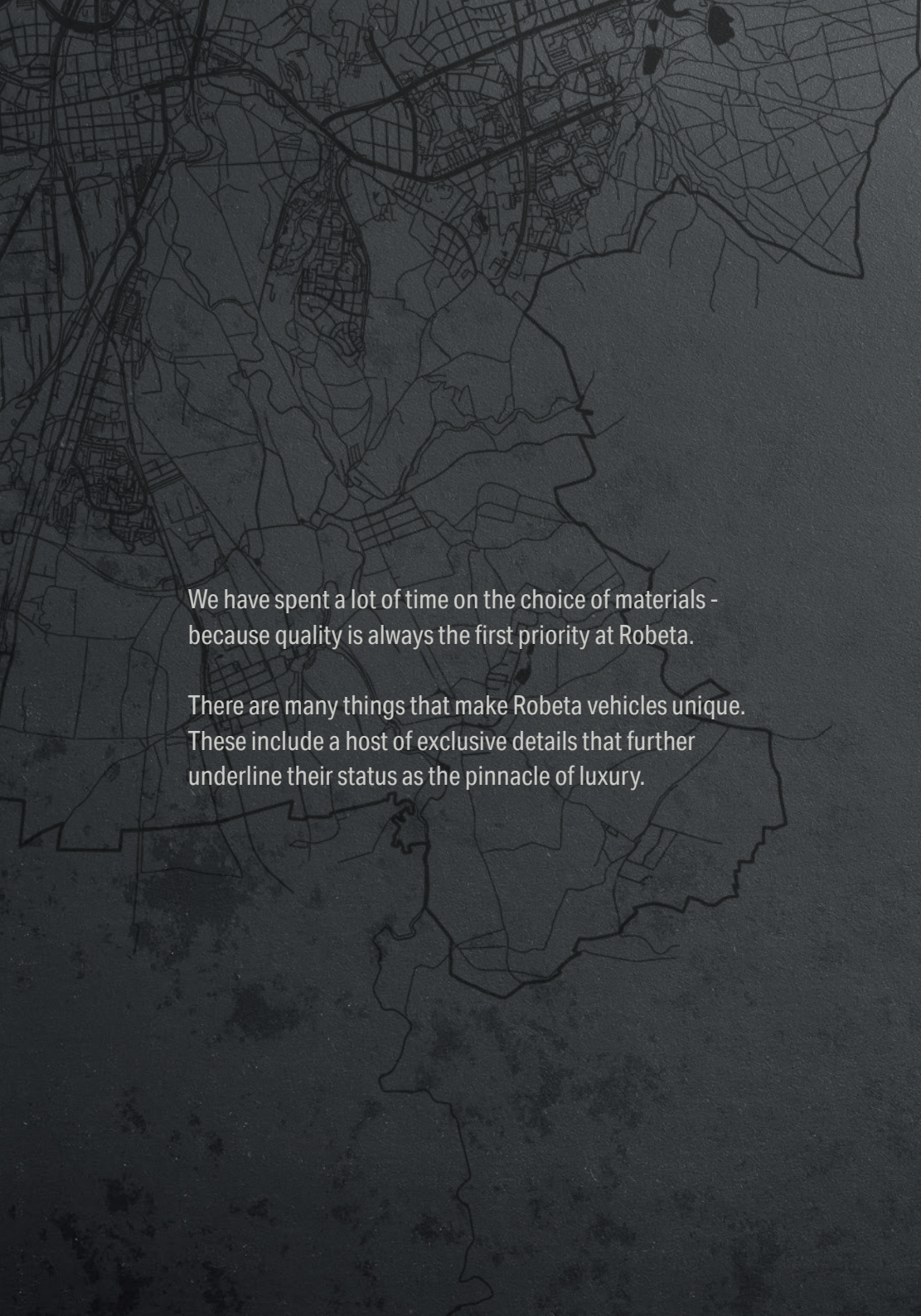
THE BED

You will not find a classic bed in this vehicle, but an electrically operated lift-up bed that is adapted to the roof of the Mercedes over the middle part of the vehicle. Its special feature is that it is the only series-produced bed that moves vertically and extends horizontally, both with the help of electricity, to the desired dimensions, a length of 200 cm and a width of 160 cm.

In addition, the bed looks like it is "floating" because it is attached to the vehicle's roof using four-point steel cables without any additional guides or supports.







We have spent a lot of time on the choice of materials -
because quality is always the first priority at Robeta.

There are many things that make Robeta vehicles unique.
These include a host of exclusive details that further
underline their status as the pinnacle of luxury.










Technical guidelines

Robeta vans have a 7-year warranty on sealing and furniture (annual inspection) as well as 24-month vehicle guarantee, individual manufacturers' guarantee for technical devices.

The indication of dimensions and weight ranges from $\pm 5\%$ due to the use of natural raw materials. By installing, upgrading and modifying Robeta vehicles in unauthorized workshops, you compromise your safety and run the risk of losing your general operating license and Robeta warranty. For this reason, repair or upgrades should be carried out by an authorized Robeta specialist broker or dealer. Subsequent, technically feasible alterations and upgrades require additional installation and require additional costs.

As a last resort, additional desired combinations may be mutually exclusive. Robeta reserves the right to make technical changes to its construction, colour and fittings to the extent that this brings technical improvement.

Price list valid from 1st December 2023. The prices include 19% VAT.



ROBETA d.o.o., Pohorska cesta 6B, 2380 Slovenj Gradec, Slovenija, **E:** info@robeta.si, **S:** www.robetamobil.si